

Genus	Vol. 18(3): 413-432	Wrocław, 30 IX 2007
-------	---------------------	---------------------

A preliminary study and review of the genus *Stylosomus* SUFFRIAN, 1848 (Coleoptera: Chrysomelidae: Cryptocephalinae)

ANDRZEJ WARCHAŁOWSKI

Zoological Institute, University of Wrocław, Sienkiewicza 21, 50-335 Wrocław, Poland
e-mail: awar@biol.uni.wroc.pl

ABSTRACT. The present study summarizes the updated state of knowledge of the systematics and taxonomy of the genus *Stylosomus*. It contains keys to their determination, a list of all existing taxa of generic, specific and infrasubspecific rank, as well as the whole bibliography necessary for a study on this genus. The new synonym is proposed: *Stylosomus lutetianus* SAINTE-CLAIRE-DEVILLE, 1914 = *S. minutissimus* GERMAR, 1824.

Key words: entomology, taxonomy, Coleoptera, Chrysomelidae, Cryptocephalinae, *Stylosomus*, review, key to species.

INTRODUCTION

The genus *Stylosomus* SUFFRIAN, 1848, comprising 28 described palaeartic species, needs still a taxonomical revision. Diagnoses and classification of those species are based on external characters (colouration of body, sculpture), aedeagi being studied in the case of a few species only. Almost all known species are distributed in Western Palaeartic area, from Eastern Palaeartic (Northern China) only two species were described.

HISTORY OF RESEARCH

The first known species, *minutissimus*, had been described (as *Cryptocephalus*) by GERMAR (1824), the next, *tamarisci* (also as *Cryptocephalus*), by HERRICH-SCHÄFFER (1838). Both mentioned species and furthermore two newly described species (*eyth-*

rocephalus and *ericeti*) were grouped into a separate genus *Stylosomus* by SUFFRIAN (1848). By the end of the First World War 20 *Stylosomus*-species were described and some short comparative studies, usually on a few species from defined areas (ABELLE DE PERRIN 1877, REY 1883, PIC, 1909) were also done. In the years 1950-2006 eight further species were described, few keys to species from limited areas (LOPATIN, 1962, 1977, PETITPIERRE, 2000 WARCHAŁOWSKI, 2003) were also published.

Genus *Stylosomus* SUFFRIAN, 1848

Stylosomus SUFFRIAN, 1848: 146 (species typica: *Cryptocephalus tamarisci* HERRICH-SCHÄFFER, 1838, fasc. 143, t. 24, first species listed).

KEY TO SUBGENERA

1. Primary puncturation of elytra arranged in regular rows, at most here and there insignificantly confused *Stylosomus* s. str.
- Primary puncturation of elytra entirely or partly (in anterior part and along the suture) randomly scattered 2.
2. Claw tarsomere about 2 × longer than tarsomere 3, tarsi shorter than tibiae *Microsomus*.
- Claw tarsomere 3-4 × longer than tarsomere 3, tarsi approximately as long as tibiae *Microstilus*.

Subgenus *Microsomus* BURLINI, 1957

species typica: *Stylosomus (Microsomus) Bechynei* BURLINI, 1957: 62, monotypic.

KEY TO SPECIES

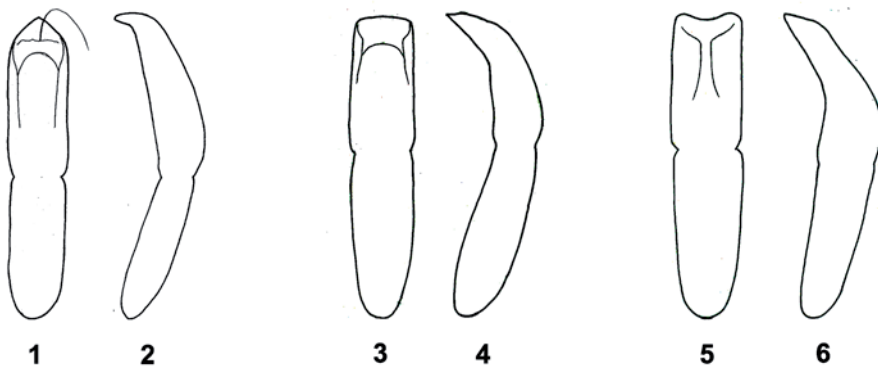
1. Along fourth interval of elytra runs a slightly convex, in anterior part paler coloured costa. Pronotum narrowed anterad, with oblique impression near fore angles. Upper side brown or grey-brown, with small, irregular lightenings on elytra. Elytra sometimes darkened in apical half. General appearance as in plate 1, fig. 1. Aedeagus not studied. Length 2.0-2.7 mm. Distributed in Kirgizstan and E Uzbekistan *costatus* LOPATIN, 1962.
- Elytra without costae, pronotum without impressions 2.
2. Upper side with dense, scale-like, adpressed, silvery hairs, covering ground of elytra and their sculpture. Upper side in female brown, vertex, pronotum and often a broad transverse band in hind part of elytra pitchy. In male upper side darker, usually pitchy, blackish or black. Legs yellow with brown or blackish tarsi. General appearance as in plate 1, fig. 3. Aedeagus not studied. Length 2.2-2.9 mm (= *bechynei* BURLINI, 1957, *hirsutus* LOPATIN, 1961). Distributed in E Kazakhstan and W Mongolia *major* BREIT, 1919.

- Upper side covered with short, semierect or erect, thin, not very dense hairs, not covering ground of elytra 3.
- 3. Pronotum long, subquadrate. Colouration of upper side rather uniform, reddish-brown, pronotum and anterior part of elytra often slightly darkened, vertex and tarsi sometimes blackish. General appearance as in plate 1, fig. 2. Aedeagus as in figs 1, 2, similarly shaped as in *tamarisci* (antithesis 18), but anterior part of lamina dorsalis (in *Stylosomus* fused with operculum) distinctly broader and flagellum usually protruding.. Length 2.2-2.6 mm.. Distributed in southern Ukraine and in southern Russia *cylindricus* MORAWITZ, 1860.
- Pronotum transverse, at least 1.4 × broader than long. Upper side densely and rather finely punctured. Upper side rusty-brown, with darker, sometimes blackish, blurred spots, lateral and central area of elytra between humeral callus and midlength always paler than basal or preapical parts. General appearance as in plate 1, fig. 4. Aedeagus not studied. Relatively large species, length 2.0-2.9 mm (= *amoenus* SAHLBERG, 1913 nec PIC, 1909, *sublineatus* SAHLBERG, 1913, *sahlbergi* WINKLER, 1929). Distributed in E Kazakhstan, Uzbekistan, Tadzhikistan and Kirgizstan *weberi* REITTER, 1905.

Subgenus *Microstilus* Pic, 1950

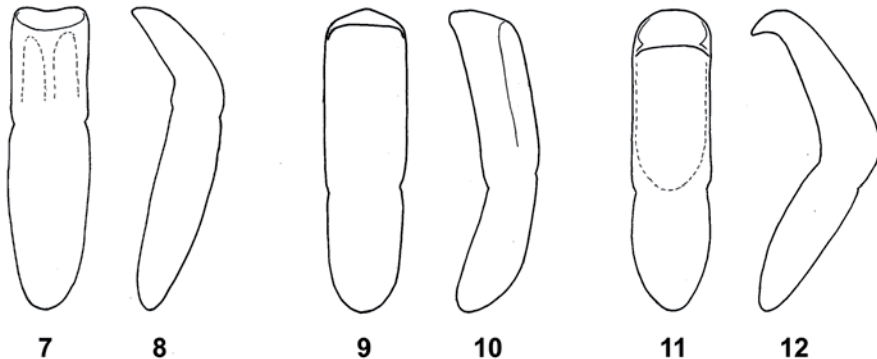
KEY TO SPECIES

- 1. Upper side entirely black or black with a pale spot on apex of elytra. 2.
- Upper side brown or black with testaceous pattern 5.
- 2. Elytra covered with very sparse and short hairs, almost or entirely glabrous. Pronotum impressed in the middle and along posterior margin. Upper side black, femora and tibiae reddish, tarsi brown or blackish. Aedeagus as in *minutissimus* (couplet 4). Length 1.6-2.2 mm. Leaves on *Quercus*. Distributed in Iberian Peninsula, southern France and northern Italy *ilicicola* SUFFRIAN, 1848.
- Elytra covered with distinct, semierect hairs, partly arranged in longitudinal rows 3.



1-6 (orig.). Aedeagus in dorsal and lateral view: 1, 2 - *Stylosomus (Microsomus) cylindricus*, 3, 4 - *S. (Microstilus) ericeti*, 5, 6 - *S. (M.) minutissimus*

3. W Mediterranean species 4.
- Species from C. Asia. Pronotum relatively long, the ratio breadth/length less than 1.5 ×. Remaining external characters as in *rugithorax* (antithesis 4). General appearance as in plate 1, fig. 5. Aedeagus not studied. Length 1.8-2.6 mm. Distributed in Kazakhstan and Uzbekistan *ater* LOPATIN, 1962.
4. Body very small. Pronotum with one transverse, shallow impression along posterior margin only. Upper side black, femora and tibiae reddish, tarsi brown or blackish. Aedeagus as in figs 5, 6. Length 1.2-1.5 mm. (= *depilis* ABEILLE, 1877, *lutetianus* SAINTE-CLAIRE DEVILLE, 1914, see chapter „Review of species“). Variation: apex of elytra pale (ab. *terminalis* FUENTE, 1907). Northern populations (from France), described as *lutetianus* SAINTE-CLAIRE DEVILLE, 1914, characterized by more distinct pubescence of upper side, are often considered as a distinct species. Distributed in S Europe from Portugal and France to Balkan Peninsula, reported also from NW Africa *minutissimus* (GERMAR, 1823).
- Larger, body coloured as in *ilicicola* (couplet 2). Ratio breadth/length of pronotum more than 1.5. Upper side rather strongly punctured. In aedeagus (figs 7, 8) tubular part very short, about 1.5 × longer than broad, with two longitudinal impressions dorsally. Length 1.8-2.2 mm. Distributed in S France, Pyrenees and N Spain *rugithorax* ABEILLE, 1877.
5. Species described from C Asia. Body somewhat stout, elytra covered with sparse and short hairs, randomly and rather finely punctured. Upper side pale reddish-brown, on elytra undefined large brightenings just before midlength and in apical part. General appearance as in plate 1, fig. 7. Aedeagus not studied. Length 2.0-2.6 mm. Distributed in mountains of Tadzhikistan *tadzhicus* LOPATIN, 1965.
- W Mediterranean species 6.
6. Posterior margin of pronotum and anterior margin of elytra black and strongly elevated, forms two approached parallel ridges. Upper side brown or blackish brown with testaceous pattern. General appearance as in plate 1, fig. 6. Aedeagus as in figs 3, 4. Length 1.8-2.4 mm. (= *bituberculatus* DESBROCHERS, 1870, *constrictus* SCHAUFUSS, 1861). Distributed in Iberian Peninsula *ericeti* SUFFRIAN, 1851.



7-12 (orig.). Aedeagus in dorsal and lateral view: 7, 8 – *S. (Microstilus) rugithorax*, 9, 10 – *Stylosomus (Stylosomus) arnoldi*, 11, 12 – *S. (S.) bipartitus*

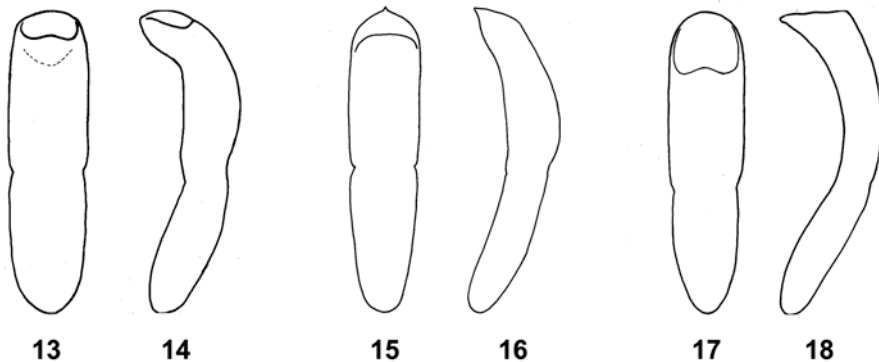
- Margins of pronotum and elytra nowhere particularly strong elevated. Upper side blackish, partly (anterior part of head, borders of pronotum narrowly, elytra at basis and largely at apex) testaceous. Male unknown. Length 2.0 mm. Described from Morocco *maroccanus* PIC, 1950.

Subgenus *Stylosomus* s. str.

KEY TO SPECIES

1. E Palaearctic species 2.
- W Palaearctic species 3.
2. Upper- and underside entirely black, sometimes with weak metallic shine. Femora and tibiae yellowish, tarsi darkened, antennomeres 1-4 or 1-5 yellow, remaining blackish. Primary puncturation of elytra very regular. General appearance as in plate 2, fig. 16. Aedeagus not studied. Length 2.1-2.4 mm (= *sinensis* LOPATIN, 1956). Distributed in N China (Kansu) and Mongolia *submetallicus* CHEN, 1941.
- Upper- and underside never entirely black Upper side yellowish to reddish-brown, except basal margins of elytra and pronotum. Elytra finely punctured, rather densely covered with adpressed or subadpressed hairs, arising not only from primary punctures, but also from intervals. Aedeagus not studied. Length 2.0-2.2 mm. Described from NE China (Suiyuan, Hopei) *vestitus* CHEN, 1941.
3. Upper side distinctly bicolorous: head and pronotum reddish, elytra black. Vertex laterally brown, legs orange reddish with piceous or black tarsi. General appearance as in plate 1, fig. 9. Apex of aedeagus (figs 11, 12) obtusely rounded, on both sides of opening small, tooth-like broadenings. Length 1.7-2.2 mm. Distributed in Algeria *bipartitus* FAIRMAIRE, 1867.
- Body differently coloured 4.
4. General appearance as in phot. 10. In male on both sides of scutellum a brown or blackish spot, in middle of elytra a broad, jagged, transverse patch. Pronotum usually brownish with two great, fulvous spots in posterior part. In female dark pattern of upper side reduced, blurred and pale. Abdomen in female testaceous, in male dark brown or blackish. Aedeagus as in figs 13, 14. Length 2.2-2.5 mm (male) to 2.4-2.7 mm (female). Distributed in Algerian subdesert area *biskrensis* REY, 1883.
- Upper side differently coloured 5.
5. At least anterior part of elytra entirely black. Pronotum often with pale area along hind margin or entirely black. Upper side of body generally black, clypeus and sometimes anterior part of frons pale, hind part of pronotum and apex of elytra often lightened, legs yellow with black or blackish tarsi. Length of body 1.7-2.2 mm. General appearance as in plate 1, fig.8. Aedeagus as in figs 9, 10. Described from Tunisia *arnoldi* WARCHAŁOWSKI, 2006.
- Upper side differently coloured 6.
6. Body entirely reddish fulvous, with two blackish transversal stripes on elytra: anterior stripe (narrower) behind scutellum, posterior (broader) behind middle.

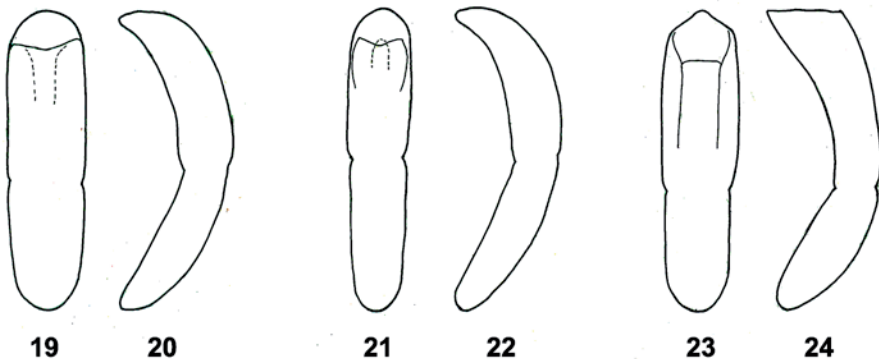
- Both stripes often divided into several little spots. Aedeagus not studied. Length 1.9-2.3 mm. Distributed in the Canary Islands *biplagiatus* WOLLASTON, 1864.
- Body differently coloured 7.
7. Body slightly bicoloured: head, pronotum and underside dark brown or blackish, elytra testaceous without distinct dark pattern, tarsi usually darkened. Body small and relatively narrow. Similar to darker coloured *nigrifrons* (couplet 10), but body on average smaller and fine reticulation of upper side distinct. General appearance as in plate 2, fig. 14. Aedeagus not studied. Length 1.5-1.9 mm. Described from Algeria *macer* WEISE, 1882.
- Body not bicoloured, but usually pale fulvous with variable brownish or blackish pattern on vertex, pronotum and elytra, tarsi often darkened or blackish 8.
8. Head and pronotum considerably more densely haired than elytra. Elytral pattern relatively pale, brownish. Sternum in the middle, tarsi and sometimes tibiae at the end blackish or black. Length 2.0-2.8 mm. See *pubescens*, couplet 16.
- Head and pronotum not or slightly more densely haired than elytra 9.
9. Body rather slender. In the middle of elytron interstices 4-6 not broader than diameter of punctures. Sternum blackish, abdomen fulvous. Colouring of upper side relatively pale, black pattern usually limited to a narrow sutural stripe only. Aedeagus as in figs 21, 22. Length 1.8-2.3 mm. Variations: suture not darkened, on hind part of vertex two blackish spots (ab. *notaticeps* PIC, 1914); a dark form: underside blackish, sutural stripe broad, on pronotum a few dark spots (ab. *sidonius* PIC, 1913). Distributed in Near East and Asia Minor *subelongatus* PIC, 1913.
- Body not distinctly slender. In the middle of elytron interstices 4-6 usually slightly broader than diameter of punctures 10.
10. Pronotum long, its lateral margins very feebly rounded, almost straight, elytra 1.9-2.2 × longer than pronotum. Body pale coloured, pronotum slightly darker than elytra, upper side without dark pattern, rarely on anterior part of pronotum large, blurred darkening only. Vertex in male black, in female pitchy, the dark colour usually encroaches on frons, in male often reaching to its anterior margin. Ground reti-



13-18 (orig.). Aedeagus in dorsal and lateral view: 13, 14 – *S. (Stylosomus) biskrensis*, 15, 16 – *S. (S.) corsicus*, 17, 18 *S. (S.) erythrocephalus*

- culation of upper side very shallow and indistinct. Apex of claw tarsomere and claws blackish. General appearance as in plate 2, fig. 15. Aedeagus as in figs 19, 20. Length 1.9-2.5 mm (= *nigrifrons* FLEISCHER, 1909 nec PIC, 1909). Distributed in Transcaspia from Turkmenia to E Uzbekistan *nigrifrons* PIC, 1909.
- Pronotum shorter, its lateral margins more rounded, elytra at least 2.4 × longer than pronotum 11.
 - 11. Colouring of body usually very light, pale fulvous or pale testaceous, darkened are: abdomen in male, five apical antennomeres, apical part of tarsi and sometimes sternum only (see also *niloticus*, couplet 15). Exterior interstices of elytra strongly convex, covered with hairs shorter than double diameter of punctures. General appearance as in plate 2, fig. 13. Aedeagus not studied. Length 1.6-2.3 mm. Variations: hind part of vertex, suture and tarsi darkened (ab. *obscuritarsis* PIC, 1914), Distributed in Balcan Peninsula, Ukraine and southern Russia. *flavus* MARSEUL, 1875.
 - Colouring of body darker, upper side usually with brownish or blackish pattern..... 12.
 - 12. Head and pronotum entirely reddish, elytra pale testaceous with a black, in hind part suddenly shortened sutural stripe. Aedeagus as in figs 17, 18. Length 1.6-2.0 mm. Described from Mesopotamia *erythrocephalus* SUFFRIAN, 1853.
 - Head darkened on vertex or on vertex and frons, except in immature or rare entirely pale specimens 13.
 - 13. Anterior margin of aedeagus with a small, sharp, almost dentiform or spine-like lamella. External characters as in *tamarisci* (antithesis 18) or *biskrensis* (couplet 4), but ground colour of upper side more rusty and dark pattern on elytra more blurred. General appearance as in plate 2, fig. 11. Aedeagus as in figs 15, 16. Length 1.7-2.1 mm. Described from Corsica, known also from Provence and Sicily, distributed probably round of Tyrrhenian Sea. *corsicus* REY, 1883.
 - Anterior margin of aedeagus obtusely cut, rounded or broadly sharpened, never with small, sharp lamella 14.
 - 14. Species from Mesopotamia, Near East and Egypt. Upper side generally pale, dark pattern absent or brownish 15.
 - Species from other area 17.
 - 15. Species described from Egypt. External characters correspond with pale forms of *tamarisci* (antithesis 18). Aedeagus not studied. Two colour aberrations were described: Body almost entirely pale (ab. *tournieri* PIC, 1909), on each elytron two darker spots at base and one spot behind middle (ab. *multinotata* PIC, 1909). Known from Egypt only, in opinion of some authors a race of *tamarisci* (antithesis 18) *niloticus* SUFFRIAN, 1857.
 - Species from Near East (S Turkey, Mesopotamia) 16.
 - 16. Pronotum covered with hairs more densely than elytra Length 2.0-2.8 mm. External characters as in *flavus* (couplet 11). Aedeagus not studied. Described from Mesopotamia, perhaps conspecific with *subelongatus* *pubescens* PIC, 1913.
 - Pronotum not distinctly more densely pubescent than elytra. Similar to *flavus* (couplet 11), but more slender, intervals of primary elytral punctures narrower. See *subelongatus*, couplet 9.

17. Species from Medirerranean area. Elytra under $2.5 \times$ longer than pronotum 18.
- Species from Transcaspia. Elytra over $2.6 \times$ longer than pronotum. Relatively large species, body length over 3.0 mm 19.
18. In typical form pronotum with very weak darkenings only, almost entirely pale, on elytra black colour forms *x*-like pattern. General appearance as in plate 2, fig. 18. Aedeagus in dorsal view almost parallel, on apex slightly narrowed and transversely cut, flagellum shortly protruding; in lateral view gently bent, towards apex not thickened, but rather somewhat flattened. Distributed in NW Algeria, Morocco and S Spain *xsignum* PIC, 1899.
- In typical form black colour does not form an *x*-like pattern. General appearance as in plate 2, fig. 17. Apex of aedeagus (figs 23, 24) not rounded, but less or more shortly, obtusely triangular, anterior part of lamina dorsalis relatively narrow, about $2 \times$ narrower than the breadth of tubular part. Tubular part in lateral view thickened towards apex. Exterior interstices of elytra rather flattened, covered with hairs longer than double diameter of punctures. In typical form upper side pale testaceous with two brownish spots on anterior part of pronotum and with blackish sutural stripe dilated in scutellar area. Tarsi and sternum blackish, abdomen in female testaceous, in male dark brown or blackish. Length 1.6-2.3 mm. Forms numerous colour variations (see review of species) Distributed widely in western part of Mediterranean area from Morocco to Dalmatia. and ?further easterly to Central Asia (see remark to *S. flavus*, couplet 11) *tamarisci* (HERRICH-SCHÄFFER, 1838).
19. Length of body over 3.0 mm (male about 3.0 mm, female about 3.4 mm). Pronotum and elytra dark brown or pitchy, margined with yellowish. Aedeagus not studied. Described from Kirgizstan *cheni* LOPATIN, 1962.
- Body on average shorter. Upper side pale, testaceous or pale rusty-brown, on pronotum often two blackish spots. Pronotum relatively short and broad. Punctuation of upper side very strong. General appearance as in phot. 12. Aedeagus not studied. Length 2.6-3.0 mm. Distributed in SE Kazakhstan, E Uzbekistan and Kirgizstan *fausti* REITTER, 1894.



19-24 (orig.). Aedeagus in dorsal and lateral view: 19, 20 – *S. (Stylosomus) nigrifrons*, 21, 22 – *S. (S.) subelongatus*, 23, 24 – *S. (S.) tamarisci*

REVIEW OF SPECIES

Subgenus *Microsomus* BURLINI, 1957

Microsomus BURLINI, 1957: 61.

Species typica: *Stylosomus (Microsomus) bechynei* BURLINI, 1957: 62, by original designation.

***Stylosomus (Microsomus) costatus* LOPATIN, 1962**

Stylosomus (Microsomus) costatus LOPATIN, 1962: 50.

Terra typica: valley of river Kugart (Kirgizstan).

Material examined: Kirgizstan, valley of river Kugart, 27.05.1925, 1 ♂, 2 ♀, leg. Dobrzhanskij.

***Stylosomus (Microsomus) cylindricus* MORAWITZ, 1860**

Stylosomus cylindricus MORAWITZ, 1860: 301.

Terra typica: vicinity of Krasnoarmeysk (Sarepta), Russia.

Material examined: Ukraina (Cherson), Skadovsk, 15.08.1969, 3 ♂, 6 ♀, leg. V. Dolin.

***Stylosomus (Microsomus) major* BREIT, 1918**

Stylosomus major BREIT, 1919: 118.

Stylosomus bechynei BURLINI, 1957: 62.

Stylosomus hirsutus LOPATIN, 1961: 97.

bechynei = *hirsutus* = *major*: LOPATIN, 1977

Locus typicus: Imam Baba (Transcaspia)

Material examined: Tadzhikistan, protected area "Tigrovaya balka", 20. 04. 1961, 2 ♀, leg. I.K. Lopatin.

***Stylosomus (Microsomus) weberi* REITTER, 1905**

Stylosomus Weberi REITTER, 1905: 94.

Stylosomus Weberi var. *amoenus* PIC, 1909: 154.

Stylosomus amoenus SAHLBERG, 1913: 73, nec PIC, 1909.

Stylosomus sublineatus SAHLBERG, 1913: 75.

Stylosomus sahlbergi WINKLER, 1929: 1245, nomen novum pro *amoenus* SAHLBERG, 1913, nec PIC, 1909.

sublineatus = *sahlbergi* = *amoenus* = *weberi*: LOPATIN, 1977.

Terra typica: Transcaspia.

Material examined: Kirgizstan, valley of river Naryn ad Tazhmyr, 1.04.1979, 1 ♂, 2 ♀, leg. Tadzhibaev.

Subgenus *Microstilus* Pic, 1950

Microstylus REY, 1883: 314, nec SCHÖNHERR, 1847: 15 (*Curculionidae*).

Microstilus PIC, 1950: 94.

Styломicrus PETITPIERRE and ALONSO-ZARAZAGA, 2000: 247.

Species typica: *Stylosomus (Microstilus) marocanus* PIC, 1950: 94, monotypic.

Stylosomus (Microstilus) ater LOPATIN, 1962

Stylosomus (Microstylus) ater LOPATIN, 1962: 51.

Locus typicus: Aktash, Karzhantau range, Uzbekistan.

Material examined: Chervak, 80 km NE of Taschkent, Uzbekistan, 12.05.1989, 1 ♀, leg. L. Behne.

Stylosomus (Microstilus) ericeti SUFFRIAN, 1851

Stylosomus ericeti SUFFRIAN, 1851: 653.

Stylosomus bituberculatus DESBROCHERS DES LOGES, 1870: 169.

Stylosomus constrictus SCHAUFUSS, 1861: 92.

bituberculatus = *ericeti*: MARSEUL, 1875: 298.

constrictus = *ericeti*: MARSEUL, 1875: 299.

Locus typicus: Montserrat, Catalonia (Spain).

Material examined: mountains Sierra Nevada, Spain, 24.06.1989, 2 ♀, leg. G. Bastazo and J. Vela; ibidem, 23.06.1990, 1 ♂, 1 ♀, leg. J. Vela.

Stylosomus (Microstilus) ilicicola SUFFRIAN, 1848

Stylosomus ilicicola SUFFRIAN, 1848: 151.

Locus typicus: vicinity of Marseille, France.

Material examined: Jimena de la Frontera, Spain (Cadiz), 29.05.1992, 2 ♂, 3 ♀, leg. A. Warchałowski; Villanueva del Trabuco, Spain (Málaga), 14.05.1988, 1 ♂, 3 ♀, leg. A. Warchałowski.

Stylosomus (Microstilus) marocanus PIC, 1950

Stylosomus (Microstilus) marocanus PIC, 1950: 94.

Locus typicus: Talmest (Grand Atlas, Morocco).

No material examined. Described based on one female only. Perhaps conspecific with *minutissimus*.

***Stylosomus (Microstilus) minutissimus* (GERMAR, 1824)**

Cryptocephalus minutissimus GERMAR, 1824: 561.

Stylosomus depilis ABEILLE, 1877: XLIX.

Stylosomus minutissimus var. *terminalis* FUENTE, 1907: 319.

Stylosomus lutetianus SAINTE-CLAIRE DEVILLE, 1914: 377. **syn. nov.**

depilis = *minutissimus*: WEISE, 1913: 17.

lutetianus = nomen novum pro *minutissimus* sensu REY, 1873: XXX.

Terra typica: Pyrenees.

Material examined: Podgrad (Castelnuovo), Croatia, , no other data, 1 ♂, leg. (?)Reitter; Yunquera, Spain (Málaga) 16.05.1988, 7 ♂, 11 ♀, leg. A. Warchałowski; Jimena de la Frontera, Spain (Cadiz) 29.05.1992, 6 ♂, 13 ♀, leg. A. Warchałowski.

In opinion of SAINTE-CLAIRE DEVILLE (1914: 377) *S. minutissimus* discussed by REY (1883) is not conspecific with *S. minutissimus* GERMAR (= *depilis* ABEILLE, 1877). He gives him subsequently (1938: 350) a “nomen novum” *lutetianus*. This opinion was not clearly confirmed by later researches, consequently we consider here the name *lutetianus* as synonymous with *minutissimus* GERM.

***Stylosomus (Microstilus) rugithorax* ABEILLE, 1877**

Stylosomus rugithorax ABEILLE, 1877: L.

Terra typica: Montibus subalpinis, France.

Material examined: ad San Sebastian, Spain (San Sebastian), 10.07.1995, leg. F. Fritzlar, 1 female; Torda, Spain (Huesca), 6.07.1995, 2 ♂, 4 ♀, leg. F. Fritzlar.

***Stylosomus (Microstilus) tadjhicus* LOPATIN, 1965**

Stylosomus tadjhicus LOPATIN, 1965:

Terra typica: Tadjhikistan (Zeravshanskiy and Gissarskiy ranges).

Material examined: Margusor (Zeravshanskiy range), 23.05.1991, 1 ♂, 2 ♀, leg. Konstantinov.

Subgenus *Stylosomus* s. str.***Stylosomus (Stylosomus) arnoldi* WARCHAŁOWSKI, 2006**

Stylosomus (Stylosomus) arnoldi WARCHAŁOWSKI, 2006: 497.

Locus typicus: El Kef (Tunisia).

Material examined: El Kef (Tunisia), 14.05.2006, 6 ♂, 10 ♀ (series typica), leg. A. Warchałowski.

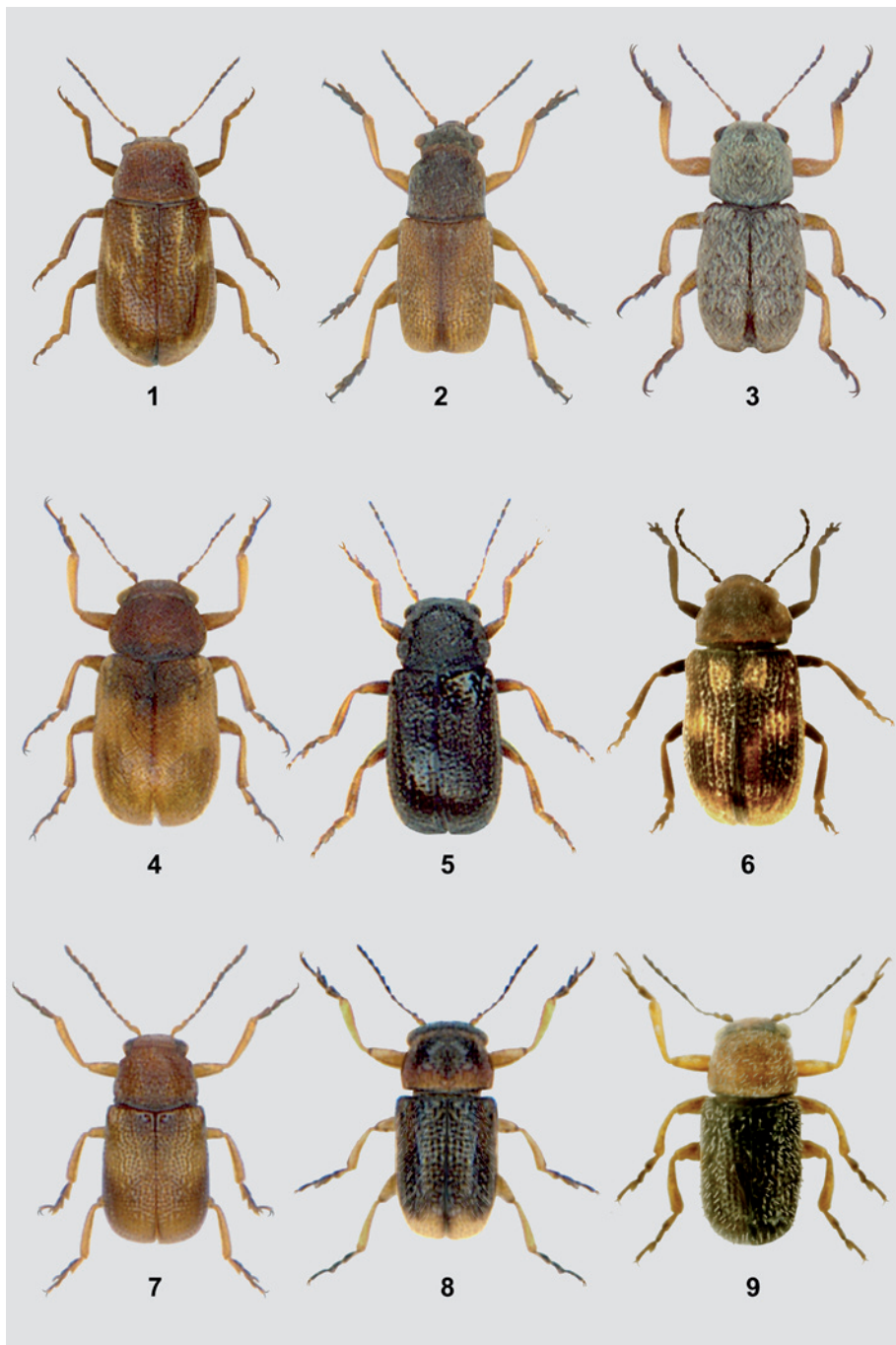


Plate 1. 1-9. General view (2, 6 and 9 - after WARCHAŁOWSKI 2003, 8 - after WARCHAŁOWSKI 2006, remaining orig.): 1 - *Stylosomus (Microsomus) costatus*, 2 - *S. (M.) cylindricus*, 3 - *S. (M.) major*, 4 - *S. (M.) weberi*; 5 - *S. (Microstilus) ater*, 6 - *S. (M.) ericeti*, 7 - *S. (M.) tadzhicus*, 8 - *S. (Stylosomus) arnoldi*, 9 - *S. (S.) bipartitus*

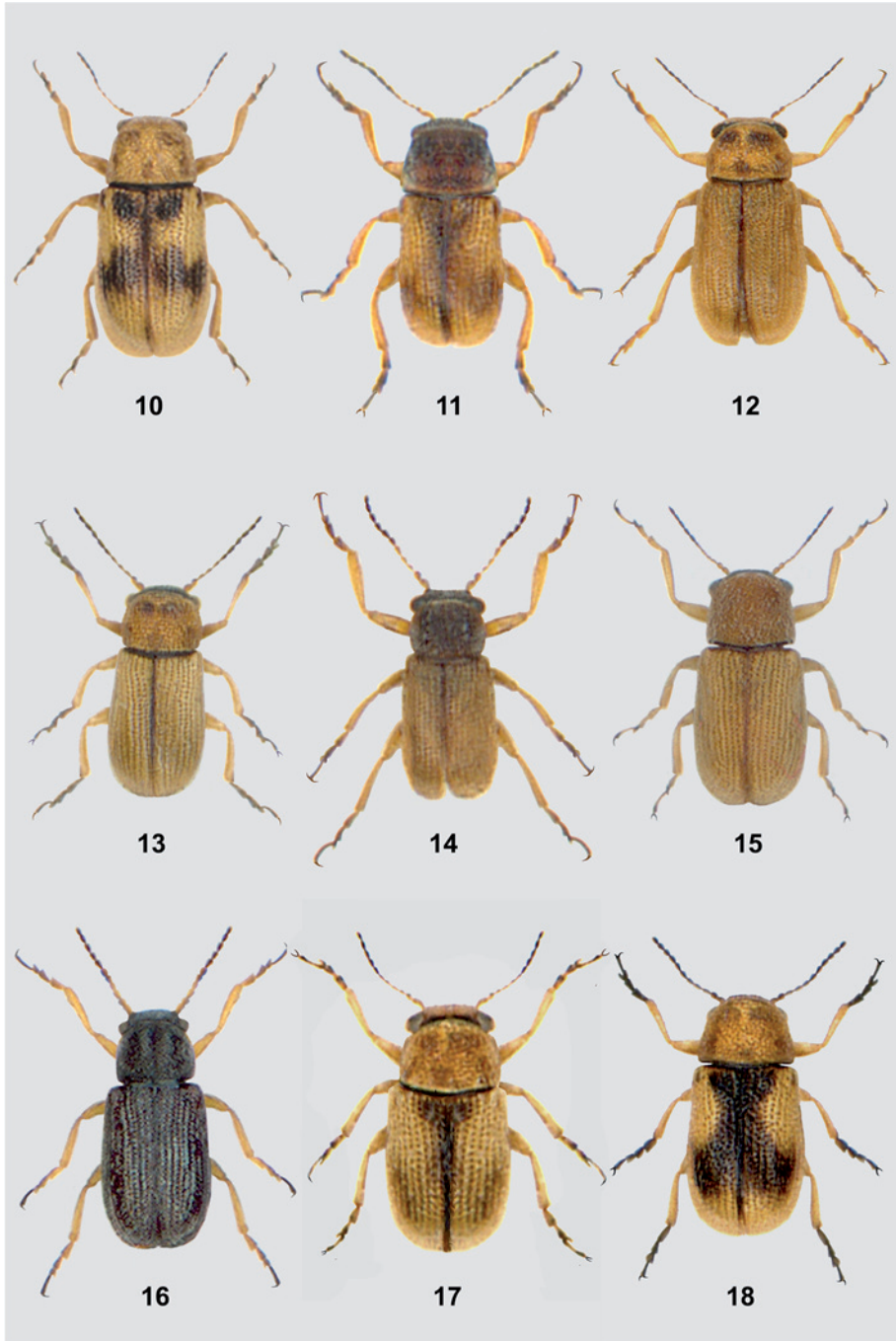


Plate 2. 10-18. General view (10 – after WARCHALOWSKI 2003, remaining orig.): 10 – *Stylosomus* (*Stylosomus*) *biskrensis*, 11 – *S.* (*S.*) *corsicus*, 12 – *S.* (*S.*) *fausti*, 13 – *S.* (*S.*) *flavus*, 14 – *S.* (*S.*) *macer*, 15 – *S.* (*S.*) *nigrifrons*, 16 – *S.* (*S.*) *submetallicus*, 17 – *S.* (*S.*) *tamarisci*, 18 – *S.* (*S.*) *xsignum*

***Stylosomus (Stylosomus) bipartitus* FAIRMAIRE, 1867**

Stylosomus bipartitus FAIRMAIRE, 1867: 414.

Terra typica: Algeria.

Material examined: Boghari (Algeria), no other data, 1 ♂, 1 ♀, leg. L. Lethierry.

***Stylosomus (Stylosomus) biplagiatus* WOLLASTON, 1864**

Stylosomus biplagiatus WOLLASTON, 1864: 399.

Locus typicus: Santa Maria Betancuria, Fuerteventura (Canary Islands).

No material examined.

***Stylosomus (Stylosomus) biskrensis* REY, 1883**

Stylosomus biskrensis REY, 1883: 320nota.

Locus typicus: Biskra, Algeria.

Material examined: Biskra, Algeria, 1886, 3 ♀, no other data; ibidem, 27.04.1987, 3 ♂, 8 ♀, leg. A. Warchałowski.

Stylosomus tamaricis v. *trifasciata* (PIC, 1909: 154) and v. *nigronotata* (PIC, ibidem) belong probably to *biskrensis*.

***Stylosomus (Stylosomus) cheni* LOPATIN, 1962**

Stylosomus.(s. str.) *cheni* LOPATIN, 1962: 49.

Locus typicus: Irkeshtam, S Kirgizstan.

No material examined.

***Stylosomus (Stylosomus) corsicus* REY, 1883**

Stylosomus corsicus REY, 1883: 319.

Terra typica: Corsica and S France (Provence).

Material examined: Sicily, Ficuzza, 3 ♂, 3 ♀, no other data; Further material (7 specimens from Corsica, sex not determined, in coll. KOCHER) superficially examined during my visit in Rabat (coll. Kocher).

A thyrrenic species, described from Corsica and S France, recorded also in Sicily.

***Stylosomus (Stylosomus) erythrocephalus* SUFFRIAN, 1853**

Stylosomus erythrocephalus SUFFRIAN, 1853: 153.

Terra typica: Mesopotamia.
No material examined.

***Stylosomus (Stylosomus) fausti* REITTER, 1891**

Stylosomus Fausti REITTER, 1891: 34.

Locus typicus: Tschinas, Kazakhstan.

Material examined: valley of river Talass, Kazakhstan (Dzhambul), 6. 08. 1908, 5 ♀, leg.?

***Stylosomus (Stylosomus) flavus* MARSEUL, 1875**

Stylosomus flavus MARSEUL, 1875:295.

Terra typica: Greece.

Material examined: Stavrodromi, Graecia (Tripoli), 30.06.1996, 2 ♂, 3 ♀, leg. A. Warchałowski.

In collections usually determined as pale form of *tamarisci* or hidden among *subelongatus*, *?niloticus* and *nigrifrons*. Supposedly a Pontic species, distributed from Austria and Dalmatia in Balcans, Ukraine and S Russia to Cyprus, E and N Turkey and ?Caucasian countries.

***Stylosomus (Stylosomus) macer* WEISE, 1882**

Stylosomus macer WEISE, 1882: 271.

Terra typica: Algeria.

Material examined: El Kala, Algeria (Annaba), 1.05.1987, 3 ♀, leg. A. Warchałowski.

WEISE (1882: 271)nota refer the redescription of *erythrocephalus* SUFFR. by Marseul (1875: 294) to *macer*. The mentioned redescription, based on (undoubtly mixed) material from Algeria and Mesopotamia, concerns probably *macer* and *subelongatus*.

***Stylosomus (Stylosomus) nigrifrons* PIC, 1909**

Stylosomus ?macer var. *nigrifrons* PIC, 1909:154.

Stylosomus nigrifrons FLEISCHER, 1909: 245, nec PIC, 1909: 154.

nigrifrons = bona species: PIC, 1913: 179.

Terra typica: Turkmenistan.

Material examined: Turkmenistan, vicinity of Ashabad, 8.05.1989, 2 ♂, 4 ♀, leg. U. Heinig; Uzbekistan (Buchara), Shafrikan, 14.05.1994, 3 ♂, 4 ♀, leg. ?; Uzbekistan, Amankutan, 19.06.1996, 3 ♀, leg. P. Nivinskij.

This species was described under the name *nigrifrons* (suggested by BANG-HAAS) almost simultaneously by PIC and by FLEISCHER. The descriptions of PIC was published in August 1909 and description of FLEISCHER at 25. September 1909; therefore the name *Stylosomus nigrifrons* PIC, 1909 has the priority and *Stylosomus nigrifrons* FLEISCHER, 1909 is a homonyme.

***Stylosomus (Stylosomus) niloticus* SUFFRIAN, 1857**

Stylosomus niloticus SUFFRIAN, 1857: 251.

Stylosomus niloticus var. *Tournieri* PIC, 1909: 154.

Stylosomus niloticus var. *multinotata* PIC, 1909: 154.

Terra typica: Egypt.

No material examined.

A doubtful species, variously defined, possibly a NE African race of *tamarisci*. In the short characteristic of this species WEISE (1882) specifies numerous, irregular, small, smooth areas scattered among puncturation of pronotum, but other authors (MARSEUL 1875, PIC 1909) do not mention this character.

***Stylosomus (Stylosomus) pubescens* PIC, 1913**

Stylosomus pubescens PIC, 1913: 179.

Terra typica: Mesopotamia.

No material examined.

In the original description PIC (op. cit.) compare *pubescens* with *niloticus*. Presence of brownish pattern on elytra in *pubescens* may suggest the ab. *multinotata* PIC, 1909: 154.

***Stylosomus (Stylosomus) subelongatus* PIC, 1913**

Stylosomus subelongatus PIC, 1913: 179.

Stylosomus subelongatus var. *sidonius* PIC, 1913: 179.

Locus typicus: Damascus (Syria).

Material examined: ad Adana, Turkey (Seyhan), 8.05.1990, 2 ♂, 4 ♀, leg. A. Warchałowski; mountains Amanus, Turkey (Hatay), 14.05.1990, 2 ♂, 3 ♀, leg. A. Warchałowski.

Little characteristic species, in collections confused with *flavus* and *cylindricus*.

***Stylosomus (Stylosomus) submetallicus* CHEN, 1941**

Terra typica: NE China (Suijuan, Hopei).

Material examined: Chuch-Sum, Mongolia, 10.07.1971, 2 ♀, leg.?

Easily recognizable by the combination of black upper side and regular arranging of primary punctures on elytra.

***Stylosomus (Stylosomus) tamarisci* (HERRICH-SCHÄFFER, 1838)**

Cryptocephalus tamarisci HERRICH-SCHÄFFER, 1838: 24.

Stylosomus tamarisci auct.

Stylosomus tamaricis auct.

Stylosomus tamariscis auct.

Stylosomus tamaricis Var. *cruciatus* WEISE, 1882: 272.

?*Stylosomus xantholus* REY, 1885: 274.

Stylosomus tamariscis v. *nigronotata* PIC, 1909: 154.

Stylosomus tamariscis var. *pallidicolor* PIC, 1909: 154.

Stylosomus tamariscis var. *trifasciata* PIC, 1909: 154.

Stylosomus tamariscis var. *Oberthuri* PIC, 1909: 154.

Stylosomus tamaricis v. nov. *rufonotatus* PIC, 1923: 22.

Stylosomus tamaricis v. nov. *Leprieuri* PIC, 1923: 23.

Terra typica: S Europe.

Material examined: Velez Rubio, Spain (Almeria), 14.05.1985, leg. A. Warchałowski, 3 ♂, 6 ♀; Guadix, Spain (Almeria), 18.05.1985, 3 ♂, 5 ♀, leg. A. Warchałowski; Aokas, Algeria (Bejaia), 2 ♂, 7 ♀, leg. A. Warchałowski.

Stylosomus tamarisci forms several colour aberrations, being often externally very similar to other species of the subgenus *Stylosomus* s. str. Its area of distribution cover N Africa from Morocco to Libya and European part of the Mediterranean area from Iberian Peninsula and W France to Dalmatia. Very numerous reports from more eastwards situated areas concern, at least partly, other species (Egypt – ?*niloticus*; Balkan, Ukraine, N Turkey and S Russia – ?*flavus*; S Turkey – ?*subelongatus*; Transcaspia – ?*nigrifrons*). Following colour aberrations were described:

ab. *pallidicolor* PIC, 1909: 154. A pale form. Body entirely pale, underside and lateral sides of vertex slightly darkened. Described from Rio Salado (NW Algeria, distr. Oran). Here probably *S. xantholus* REY, 1885: 274 described from Montpellier (France).

tamarisci forma typica. Upper side testaceous or yellowish, vertex darkened, pronotum with blurred, weak, inddefined darkenings, at scutellum a rather large, triangular or heart-like spot, prolonged into distinct sutural stripe.

ab. *leprieuri* PIC, 1923: 23. Elytra testaceous with blackish sutural stripe and with blackish spot in hind part of each elytron. Described from Annaba (NE Algeria).

ab. *cruciatus* WEISE, 1882: 272. Upper side pale, on pronotum two black spots (sometimes fused), elytra as in ab. *leprieuri*, but blackish spots usually fused, forming a transverse band.

ab. *nigronotatus* PIC, 1909: 154. Coloured as *biskrensis* (couplet 4) and perhaps also conspecific with him. Described from Saada, south of Biskra (Algeria).

ab. *trifasciatus* PIC, 1909: 154. Coloured as *biskrensis* (couplet 4) and perhaps conspecific with him. Dark spots more confluent than in *nigronotata*. Described from Biskra (Algeria).

ab. *rufonotatus* PIC, 1923: 22. A dark form. Elytra pitchy or blackish, in basal part with reddish markings, apical part testaceous. Described from Kérouan (Tunisia), perhaps a pale form of *arnoldi* (couplet 5).

ab. *oberthuri* PIC, 1909: 154. A melanotic form. Pronotum entirely or partly darkened, elytra dark with pale apex. Described from Algeria.

***Stylosomus (Stylosomus) vestitus* Chen, 1941**

Stylosomus vestitus CHEN, 1941: 19.

Terra typica: N China (Suiyuan, Hopei)
No material examined.

***Stylosomus (Stylosomus) xsignum* Pic, 1899**

Stylosomus x-signum PIC, 1899: 261.

Stylosomus tamariscis var. *andalusiaca* PIC, 1909: 154.

ab. *andalusiacus* PIC, 1909: 154. Elytra coloured similarly as in ab. *cruciatus* or in *S. xsignum* (couplet 18), pronotum almost uniformly pale, without spots. One specimen from Andalusia examined by me, corresponding to this description, turned out to be *xsignum*. Presence of this form in Andalusia „and not only in Algeria“ was previously mentioned by FAIRMAIRE (1867).

Locus typicus: Jericho (Israel) - possibly an labelling error.

Material examined: Spain (Andalusia without other data, one male in coll. Cobos); Morocco (High Atlas), Ouirgane, 8.05.1998, 2 ♂, 5 ♀, leg. A. Warchałowski. Further material (13 specimens in coll. KOCHER from High Atlas and vicinity of Fes) superficially examined during my visit in Rabat (coll. Kocher). Previously reported also from mountains Hoggar (Algeria) by PEYERIMHOFF 1931. *S. xsignum* has not been reported from Near East for over 100 years now; possibly Jericho given by PIC as type-locality bases on a labelling error.

REFERENCES

- ABEILLE DE PERRIN, E., 1877. [Note sur les trois espèces de *Stylosomus* européens]. Ann. Soc. ent. France, Paris, sér. 5, 7, Bull.: XLVIII-L.
- BREIT, J., 1919. Eine neue *Stylosomus*-Art nebst Übersicht der bekannten mittelasiatischen Arten. Kol. Rundsch., Wien, 7 (1918/1919): 118-119.
- BURLINI, M., 1957. Un nuovo *Stylosomus asiatico* (Col. Chrysomelidae). Boll. Soc. Ent. Ital., Genova, 87, 3/4: 61-63.
- CHEN, S. H., 1941. Two new *Stylosomus* from North China (Col. Cryptocephalidae). Sinensia, Beijing, 12, 1/6: 19-21.
- DESBROCHERS DES LOGES, 1870. In: HEYDEN, L., 1870 (vide).
- FAIRMAIRE, L., 1867. Essai sur les Coléoptères de Barbarie. Cinquième partie. Ann. Soc. ent. France, Paris, sér. 4, 7: 387-416.
- FLEISCHER, A., 1909. Ein neuer *Stylosomus* aus Turkestan. Wien. ent. Zeit., 28, 7/8: 245. *Stylosomus* from North China (Col. Cryptocephalidae). Sinensia, Beijing, 12, 1/6: 19-21.
- FUENTE, J. M., 1907. Datos para la fauna de la provincia de Ciudad Real. XIX. Bol. Real Soc. Esp. Hist. Nat., 7: 317-323

- GERMAR, E. F., 1824. Insectorum species novae aut minus cognitae, descriptionibus illustratae, vol. I. Halae, XXIV + 624 p.
- HERRICH-SCHÄFFER, G. A. W., 1829-1844. Die Fortsetzung von Panzer Faunae insectorum Germaniae initia. Regensburg, Heft 111-190.
- , 1838. Nr 143 in: Herrich-Schäffer, G. A. W., 1829-1844 (vide).
- HEYDEN, L., 1870. Entomologische Reise nach dem südlichen Spanien, der Sierra Guadarrama und Sierra Morena, Portugal und den Cantabrischen Gebirge. Berl. ent. Ztschr., Berlin, 1870, Beiheft, 218 pp.
- KIESENWETTER, M. H., 1851. Énumération des Coléoptères trouvés dans le midi de la France et en Catalogne. Ann. Soc. ent. France, Paris, sér. 2, 9: 385-440 and 577-656.
- LOPATIN, I. K., 1956. O novykh i maloizvestnykh vidakh zhukov-listoedov (Coleoptera, Chrysomelidae) SSSR i sopredel'nykh stran. Izv. Otd. estestv. Nauk Tadzh. AN., Dushanbe, **16**: 157-163.
- , 1961. Materialy k faune zhukov-listoedov (Coleoptera, Chrysomelidae) Srednej Azii. Soobshcheniye III. Trudy Inst. zool. parazit. Akademii Nauk Tadzhikskoy SSR. Dushanbe, **20**: 97-105.
- , 1962. Novye sredneaziatskie vidy roda *Stylosomus* SUFFR. (Coleoptera, Chrysomelidae). Doklady Akademii Nauk Tadzhikskoy SSR. Dushanbe, **5**, 2: 49-51.
- , 1965. Novye vidy listoedov (Coleoptera, Chrysomelidae) iz Tadzhikistana. Dokl. Akad. Nauk Tadzh. SSR, Dushanbe, **8**, 1: 38-41.
- , 1974. Listoedy roda *Stylosomus* SUFFR. fauny SSSR (Coleoptera, Chrysomelidae). Vestnik belorusskogo gos. univ., Minsk, ser. 2, 1: 45-48.
- , 1977. Zhuki-listoedy (Chrysomelidae) Srednej Azii i Kazakhstana. Leningrad, 268 p.
- MARSEUL, S. A., 1875. Monographie des Cryptocéphales de l'ancien-Monde. Abeille, Paris, **21**: 1-108.
- MORAWITZ, F., 1860. Beschreibung einiger neuen Chrysomelidae aus der Umgegend von Sarepta. Bull. Soc. imp. Nat., Moscou, **33**, 1: 298-302.
- PETITPIERRE, E., 2000. Coleoptera Chrysomelidae I. In: RAMOS, M. A. et al. (eds.) Fauna Ibérica, vol. **13**, Museo Nacional de Ciencias Naturales, CSIC, Madrid, 521 pp + 6 pls.
- PETITPIERRE, E., ALONSO-ZARAZAGA M.-A., 2000. In: PETITPIERRE, E., 2000 (vide).
- PEYERIMHOFF, P., 1931. Mission scientifique du Hoggar, Coléoptères. Mémoires de la Société d'Histoire Naturelle de l'Afrique du Nord, Alger, **2**, 172+4 pp, 3 pls, 2 maps.
- PIC, M., 1899. Diagnoses de Coléoptères d'Orient. Bull. Soc. Hist. nat. Autun, Autun, **12**: 252-261.
- , 1909. Descriptions ou diagnoses et Notes diverses. l'Echange, Moulins, **25**: 153-156
- , 1913. Notes diverses, descriptions et diagnoses (Suite). l'Echange, Moulins, **29**: 177-181.
- , 1914. Notes diverses, descriptions et diagnoses (Suite). l'Echange, Moulins, **30**: 10-13.
- , 1923. Notes diverses, descriptions et diagnoses. l'Echange, Moulins, **39**: 21-23.
- , 1950. Cinq nouveaux coléoptères du Maroc. Comptes-rendus des séances mensuelles de la Soc. Sci. nat. du Maroc, Rabat, **1950**: 92-94.
- REITTER, E., 1891. Neue Coleopteren aus Europa, den angrenzenden Ländern und Sibirien, mit Bemerkungen über bekannte Arten. 12. Teil. Dtsch. ent. Ztschr., Berlin, **1891**, 1: 17-36
- , 1905. Acht neue Coleopteren aus der palaearktischen Fauna. Wien. ent. Zeit., Wien, **24**, 3/4: 90-94.
- REY, C., 1883. Révision des genres *Disopus*, *Pachybrachys* et *Stylosomus* (Suite et fin). Rev. Ent., Caen, **2**, 12: 313-326.
- , 1885. Supplément à la révision des *Stylosomus*. Rev. Ent., Caen, **4**, 9: 274-275.
- ROUBAL, J., 1922. Sechs Coleopteren-Neuheiten nebst Bemerkungen. Ent. Bl., Berlin, **18**, 3: 115-116.
- SAHLBERG, J., 1913. Coleoptera mediterranea et rosso-asiatica nova et minus cognita. Öfv. Fins. Vet.-Soc. Förh., Helsingfors, **55** (1912/1913), 8: 1-88.
- SAINTE-CLAIRE DEVILLE, J., 1914. Catalogue critique des Coléoptères de la Corse. Caen, 573 —, 1938. Catalogue raisonné des Coléoptères de France. Abeille, Paris, **36**, 3 (1937): 1-467.
- SCHAUFUSS, L. W., 1861. Bericht über die Sitzungen der Sektion für Zoologie. [Descriptions of six new species]. Sitzungs-Ber. naturwiss. Ges. Isis., Dresden, **1861** (10-12): 91-92.
- SCHÖNHERR, C. J., 1847. Mantissa secunda familiae Curculionidum seu descriptio novorum quorundam generum Curculionidum. Holmiae, 86 p.
- SUFFRIAN, E., 1848. Revision der Europäischen Arten der Gattung *Cryptocephalus*. (Fortsetzung und Schluss). Linn. ent., Berlin, Posen und Bromberg, **3**: 1-152.
- , 1851. *Stylosomus ericeti* in: Kiesenwetter, M. H., 1851 (vide).
- , 1853. Berichtiges Verzeichnis der Europäischen Cryptocephalen. Linn. ent., Berlin, **8**: 88-153.

- , 1857. Zur Kenntniss der Afrikanischen Cryptocephalen. Linn. ent., Berlin, **11**: 57-260.
- WARCHAŁOWSKI, A., 2003. Chrysomelidae. The leaf-beetles of Europe and the Mediterranean area. Warszawa, 600 p, 56 pls.
- , 2006. *Stylosomus arnoldi*, a new North-African species of the subfamily Cryptocephalinae (Insecta: Coleoptera: Chrysomelidae). Annales Zoologici, Warszawa, **56**, 3: 497-498.
- WEISE, J., 1881-1893. Chrysomelidae. In: Naturgeschichte der Insekten Deutschlands. **VI**. Berlin, XIV + 1161 p.
- , 1882 in: WEISE, J., 1881-1893 (vide).
- , 1913. Synonymische Bemerkungen. Wien. ent. Zeit., Wien, **32**, 1: 17-18.
- WINKLER, A., 1927-1932. Catalogus Coleopterorum Regionis Palaearcticae. I, II., Wien, VI + 1698 p.
- , 1929 in: WINKLER, A., 1927-1932 (vide).
- WOLLASTON, T. V., 1864. Catalogue of the Coleopterous Insects of the Canaries in the collection of the British Museum. London, XIII + 648 p.